



1200 E. 151<sup>st</sup> Street  
Olathe, KS 66062  
913-397-8200

## SERVICE COMMUNIQUE

9/25/2025

**To:** Garmin Aviation Service Centers and Distributors  
**From:** Garmin Aviation Product Support  
**Subject:** G1000 Loader Card Utility Version 1.2 (006-A0506-01)

Dear Service Center Manager,

A new and improved G1000 Loader Card Utility Version 1.2 (006-A0506-01) is now available.

Microsoft Windows 10 (and newer) uses a different SD card format type that prevents a G1000 with GDU software earlier than 13.00 from recognizing an SD card. This G1000 Loader Card Utility corrects this issue.



### NOTE

The Loader Card utility is not needed for G1000® Flight Deck systems with GDU software versions 13.00 and later, or any G1000® NXi Flight Deck, G2000® Flight Deck, G3000® Flight Deck, or G5000® Flight Deck systems.

1. From the Support-Software Downloads section of <https://dealers.garmin.com>, download and install the G1000 Loader Card Utility Version 1.2 (006-A0506-01).
2. Build the G1000 software loader card per airframe specific instructions.
3. Leave the card in the SD card reader.
4. Run the G1000 Loader Card Utility.

© 2025

Garmin Ltd. or its subsidiaries

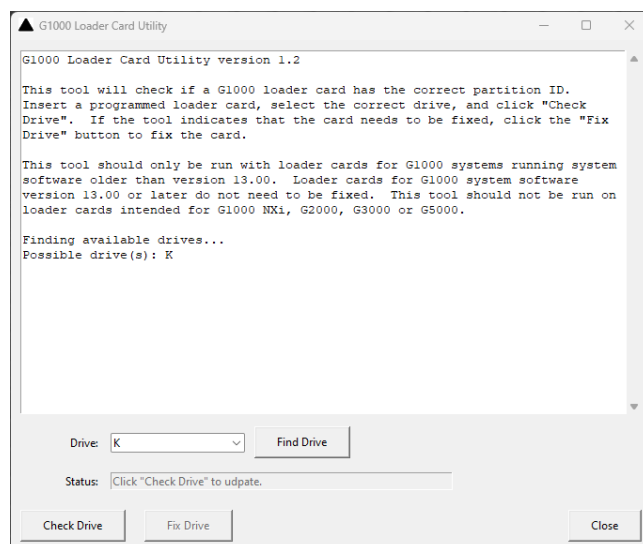
All Rights Reserved

Except as expressly provided herein, no part of this document may be reproduced, copied, transmitted, disseminated, downloaded or stored in any storage medium, for any purpose without the express prior written consent of Garmin. Garmin hereby grants permission to download a single copy of this document and of any revision to this document onto a hard drive or other electronic storage medium to be viewed and to print one copy of this document or of any revision hereto, provided that such electronic or printed copy of this document or revision must contain the complete text of this copyright notice and provided further that any unauthorized commercial distribution of this document or any revision hereto is strictly prohibited.

# GARMIN®

1200 E. 151<sup>st</sup> Street  
Olathe, KS 66062  
913-397-8200

5. Confirm the selected drive is correct.



6. If the correct drive is not listed, make sure the SD card is inserted and select 'Find Drive.'
7. Select 'Check Drive.'
8. The G1000 Loader Card Utility will indicate if the G1000 software loader card needs to be fixed.

```
Checking drive K...  
Drive status: Drive K Partition ID = 0x0C: Needs to be fixed  
Loader card in drive K needs to be fixed.
```

9. Select 'Fix Drive' if the card needs to be fixed.
10. The following text will appear.

```
Checking drive K...  
Drive status: Drive K Partition ID = 0x0B: OK  
The loader card in drive K is OK.
```

11. Safely eject the SD card.

Sincerely,

Garmin Aviation Support  
1-888-606-5482  
[avionics@garmin.com](mailto:avionics@garmin.com)

© 2025  
Garmin Ltd. or its subsidiaries  
All Rights Reserved

Except as expressly provided herein, no part of this document may be reproduced, copied, transmitted, disseminated, downloaded or stored in any storage medium, for any purpose without the express prior written consent of Garmin. Garmin hereby grants permission to download a single copy of this document and of any revision to this document onto a hard drive or other electronic storage medium to be viewed and to print one copy of this document or of any revision hereto, provided that such electronic or printed copy of this document or revision must contain the complete text of this copyright notice and provided further that any unauthorized commercial distribution of this document or any revision hereto is strictly prohibited.